

BEAM GROUNDING CLAMP

FOR I-BEAM AND STRUCTURAL STEEL GROUNDING APPLICATIONS

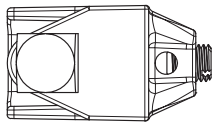
Hubbell's beam grounding clamp combines a high-strength bronze body and a cup point steel mounting bolt to effectively bond ground wire to the steel structures typical of a mobile home.

MATERIAL

- Body - Bronze
- Hardware - Galvanized Steel

BENEFITS

- High-Strength Bronze body
- Cup point mounting bolt cuts through paint or oxide layers to provide effective ground
- Slotted set-screw for ground wire connection



LISTED

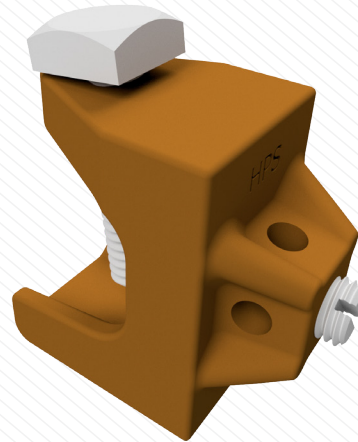
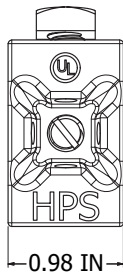
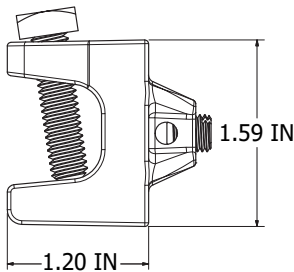


Figure 1

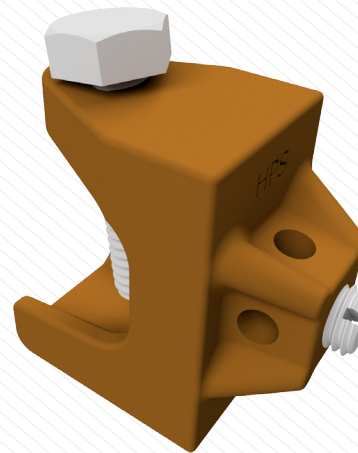


Figure 2

Part Number	Figure	Cup Point Mounting Bolt		Set Screw		Carton Quantity	Carton Weight (LBS)
		Type	Application Range	Type	Application Range		
BGC2181	1	5/16"-18 x 1-1/4" SQUARE HEAD	UP TO 1/2" THICK FLANGE	5/16"-24 x 3/8" SLOTTED HEAD	#14 TO #6 AWG GROUND WIRE	50	15
BGC2181A	2	5/16"-18 x 1-1/4" HEX HEAD				50	15



hubbellpowersystems.com

For product inquiries, please contact your local sales representative or customer service representative.

©2019 Hubbell Incorporated. Because Hubbell has a policy of continuous product improvement, we reserve the right to change design and specifications without notice. Printed in the U.S.A. | SF_05_137E